

EPA 2021

B6.7

With nearly 40 years in production and more than 13 million engines built, the Cummins B6.7 is already the proven champion of medium-duty fleet reliability.

Available in the International® MV™ and HV™ Series, we've optimized the EPA 2021 B6.7 line-up to make an already dependable and durable product even better.

- We synchronized and extended scheduled maintenance intervals to maximize uptime and lower TCO
- We kept everything you love about the B6.7 and made technical improvements so the engine will perform even better — based on the way you work
- We made improvements to emissions and on-board diagnostics (OBD) to ensure the B6.7 meets or exceeds EPA and CARB requirements for 2021

Each improvement was designed to help you keep trucks on the road longer and put more money back to your bottom line.

EPA 2021 B6.7 TRUCK RATINGS

Feature Code	Advertised HP	Governed Speed (RPM)	Torque (lb-ft @ RPM)
0012ERC**	200	2600	520 @ 1600 RPM
0012ERD**	220	2600	520 @ 1600 RPM
0012ERE**	220	2600	600 @ 1600 RPM
0012ERG**	240	2600	560 @ 1600 RPM
0012ERH*/**	250	2600	660 @ 1600 RPM
0012ERJ	260	2600	660 @ 1600 RPM
0012ERK	280	2600	660 @ 1600 RPM
0012ERL	300	2600	660 @ 1600 RPM
0012ERM*	325	2600	750 @ 1800 RPM
Rated for Emergency Vehicles Only			
0012ESD	340	2600	700 @ 1600 RPM
0012ESE	360	2600	800 @ 1600 RPM

*Standard and refuse rated

** Not available for emergency applications

B6.7 LIFETIME OPERATING COST REDUCTION

Up to 3% Lifetime TCO Reduction Compared to 2017 Model*



Fuel DEF Fuel Filter Oil and Filter Crankcase Filter DPF Valve Train

Operating cost reduction calculation based on B6.7 Efficiency Series, P&D application, 25k annual miles over 7 years.

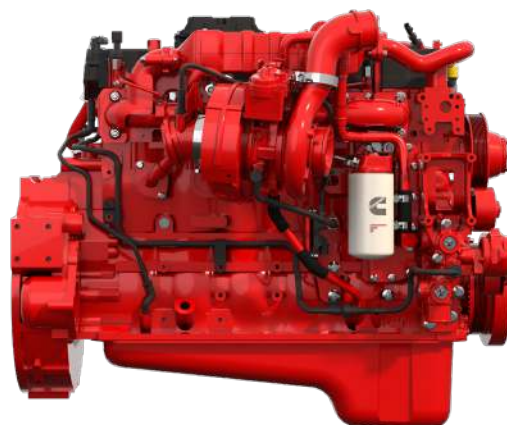
*3% TCO savings is not a guarantee for any individual customer.



2021 B6.7 MAINTENANCE INTERVALS

Maintenance Event	EPA 2017 B6.7	EPA 2021 B6.7
Oil and Filter Change*	Up to 20K miles/550 hours/12 months	Up to 30K miles/1000 hours/18 months
Fuel Filter Change*	15K miles/500 hours/12 months	60K miles/2000 hours/18 months
Crankcase Ventilation Filter ("Breather") Change	75K miles/2500 hours	MAINTENANCE FREE
Valve Lash Adjust	150K miles/5000 hours	150K miles/5000 hours
DPF Clean	200K miles/6500 hours	200K miles/6500 hours
DEF Filter Change	200K miles/6500 hours	200K miles/6500 hours

*Duty cycle dependent. See owner's manual for full maintenance schedule.



EPA 2021

L9

The EPA 2021 L9 builds on the strong legacy of the Cummins L-series platform: more than 35 years of production and more than 5 million engines manufactured globally.

Available in the International® MV™ and HV™ Series, this medium-duty workhorse delivers class-leading power and torque ratings and power-to-weight ratios to get the toughest jobs done. For 2021, we made the L9 more efficient by minimizing frictional losses and optimizing combustion to improve fuel economy and lower operating costs without sacrificing performance.

We optimized the 2021 L9 to:

- Deliver fuel efficiency improvements
Up to 1.5% for the Productivity Series
Up to 3.5% for the Performance Series
- Extend scheduled maintenance intervals to maximize uptime and lower TCO
- Downspeed peak torque and add more power to the Productivity Series
- Connectivity enhancements through Connected Solutions™

EPA 2021 L9 TRUCK RATINGS

Feature Code	Advertised HP	Governed Speed (RPM)	Peak Torque (lb-ft)	MV	HV
0012ESJ**	260	2200	860 @ 1200 RPM	X	X
0012ESK	270	2200	860 @ 1200 RPM	X	X
0012ESL*	300	2200	860 @ 1200 RPM	X	X
0012ESM*	330	2200	1000 @ 1200 RPM	X	X
0012ESN*	350	2200	1050 @ 1200 RPM	X	X
0012ESP	360	2200	1150 @ 1200 RPM	X	X
0012ESR*	370	2100	1250 @ 1200 RPM		X
0012ESS**	380	2100	1250 @ 1200 RPM		X
Rated for Emergency Vehicles Only					
0012EST	380	2200	1150 @ 1200 RPM		X
0012ESU	400	2200	1250 @ 1200 RPM		X
0012ESV	450	2100	1250 @ 1200 RPM		X

See International Truck Component Book for additional ratings information.

*Standard and refuse rated

** Not available for emergency applications



2021 L9 MAINTENANCE INTERVALS

Maintenance Event	EPA 2017 L9	EPA 2021 L9
Oil and Filter Change*	Up to 35K miles/ 1000 hours/ 18 months*	Up to 50K miles/ 1500 hours/ 18 months*
Fuel Filter Change	15K miles/ 500 hours/ 12 months	50K miles/ 1500 hours/ 18 months
Crankcase Ventilation Filter ("Breather") Change	60K miles/ 2000 hours	MAINTENANCE FREE
Valve Lash Adjust	150K miles/ 5000 hours	150K miles/ 4500 hours
DPF Clean	200K miles/ 6500 hours	200K miles/ 6500 hours
DEF Filter Change	200K miles/ 6500 hours	200K miles/ 6500 hours

*Duty cycle dependent

L9 ANNUAL OPERATING COST REDUCTION

L9 (2017)



L9 (2021)



■ Engine Oil and Filter ■ Cooling System ■ Valve Train ■ DPF
■ DEF Filter ■ Drive Belts ■ Fuel Filter

Based On 45,000 Annual Miles, 1.5% FE improvement and Normal Duty Cycle (30K Miles ODI)



Cummins Inc.
Box 3005
Columbus, IN 47202-3005
U.S.A.

1-800-CUMMINS™ (1-800-286-6467)
cummins.com

Bulletin 5676397 Produced in U.S.A. 6/21
©2021 Cummins Inc.